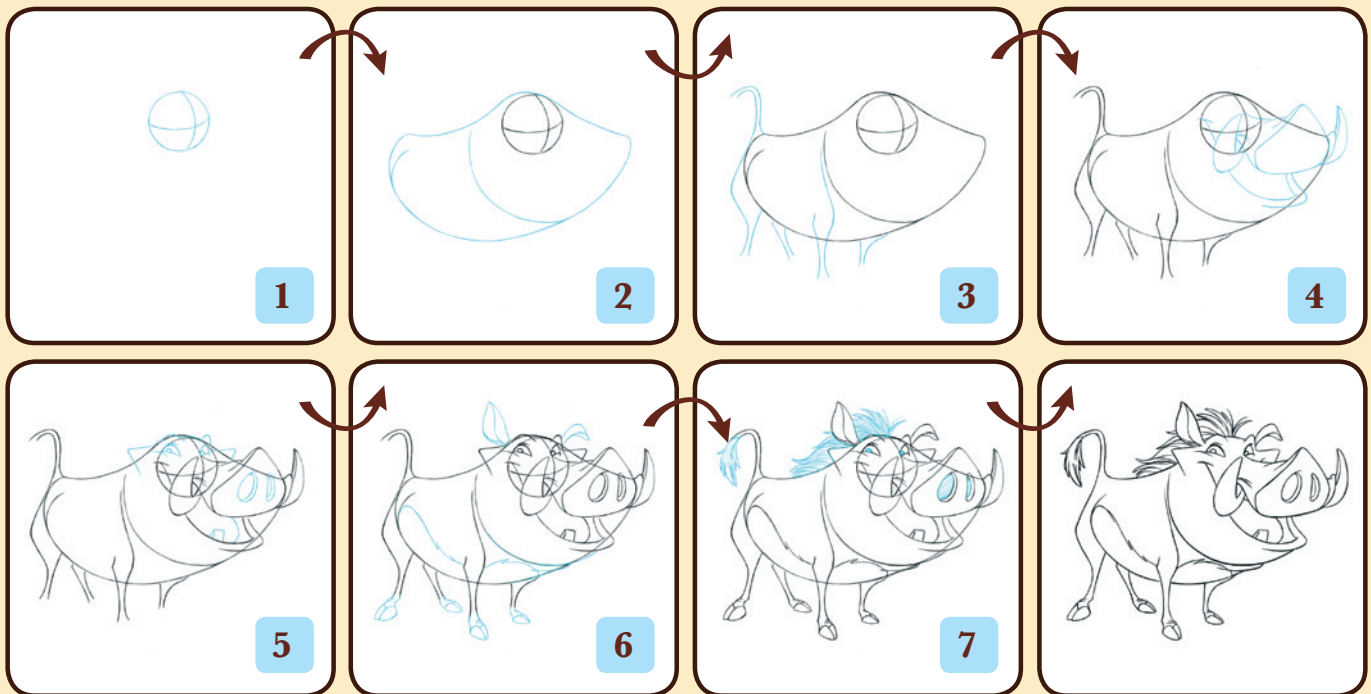


HOW TO DRAW PUMBAA



Learn to draw one of your favorite characters from **THE LION KING** with celebrated Disney Animator, **Tony Bancroft**.

Follow these seven basic steps and you'll be drawing like a true Disney Animator!



Step 1:

- Start with a very simple circle
- Then add a set of cross hairs horizontally & vertically to define the eyeline

Step 2:

- Define the headshape with a big round form extending from your initial circle
- From the left of the head shape, add a rounded tube form to define Pumbaa's body

Step 3:

- Add in his tail which sticks up like a flag
- Drop in his four skinny legs

Step 4:

- Add a large triangular shape to represent his nose
- Add his smile line and the top line which defines his snout
- Add his tusks
- Put in his wide open mouth and don't forget his bottom lip

Step 5:

- Place Pumbaa's eyes above his smile line and draw in his eyebrows
- Add his triangular wart shapes to the side of his face
- Add Pumbaa's tooth and tongue
- Define Pumbaa's nose by adding his nostrils

Step 6:

- Add his big ears
- Add more detail to his torso
- Place his hooves at the end of his legs

Step 7:

- Define Pumbaa's hair which is very un-kept...he's a bachelor
- Add a fluffy bush of hair to his tail
- Shade in his mouth and nostrils

Now color Pumbaa,
Have fun!



My Drawing of **PUMBAA**



IN THEATERS SEPTEMBER 16 IN 3D

ON  +  +  OCTOBER 4

LIMITED TIME

